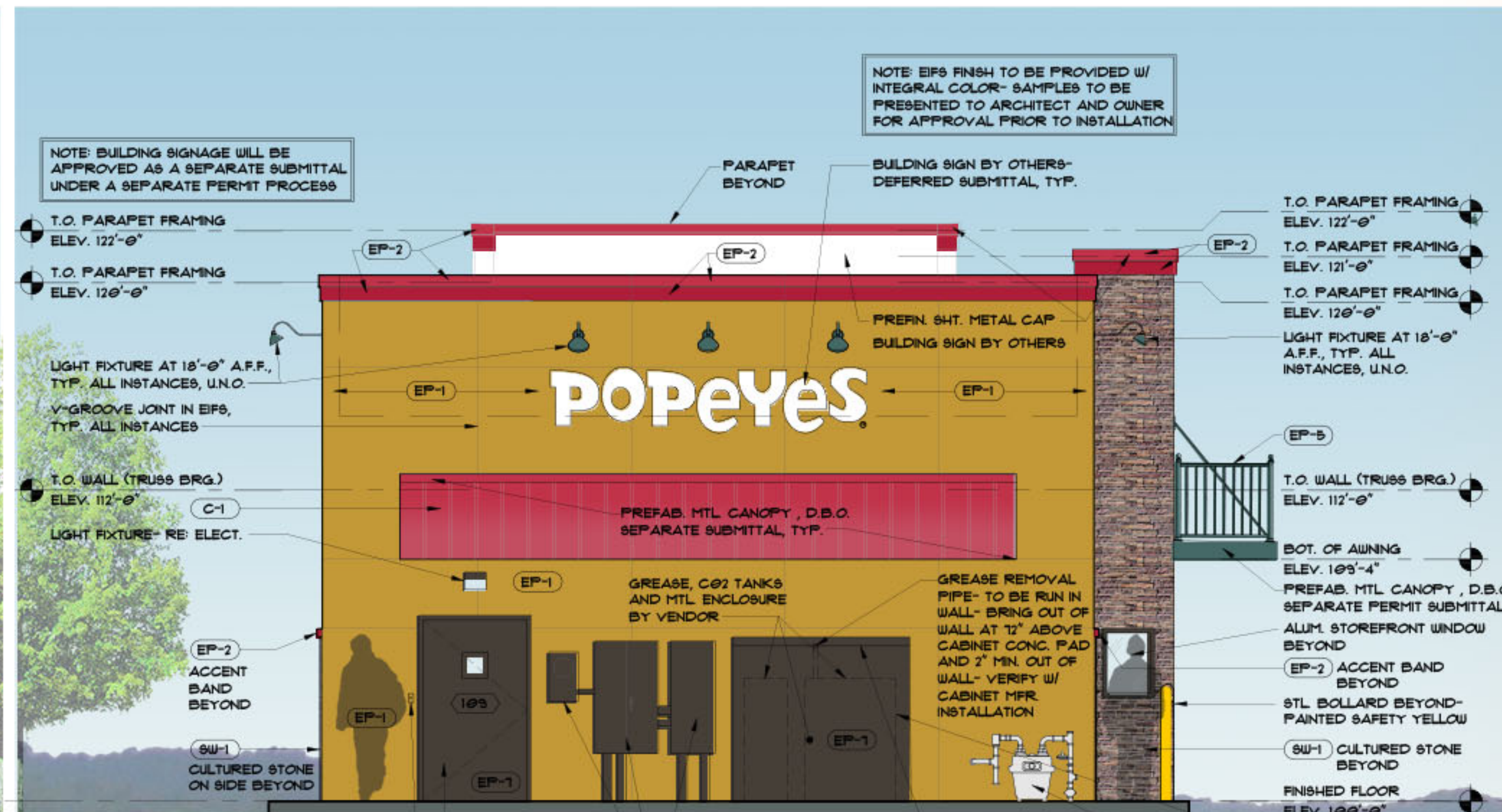
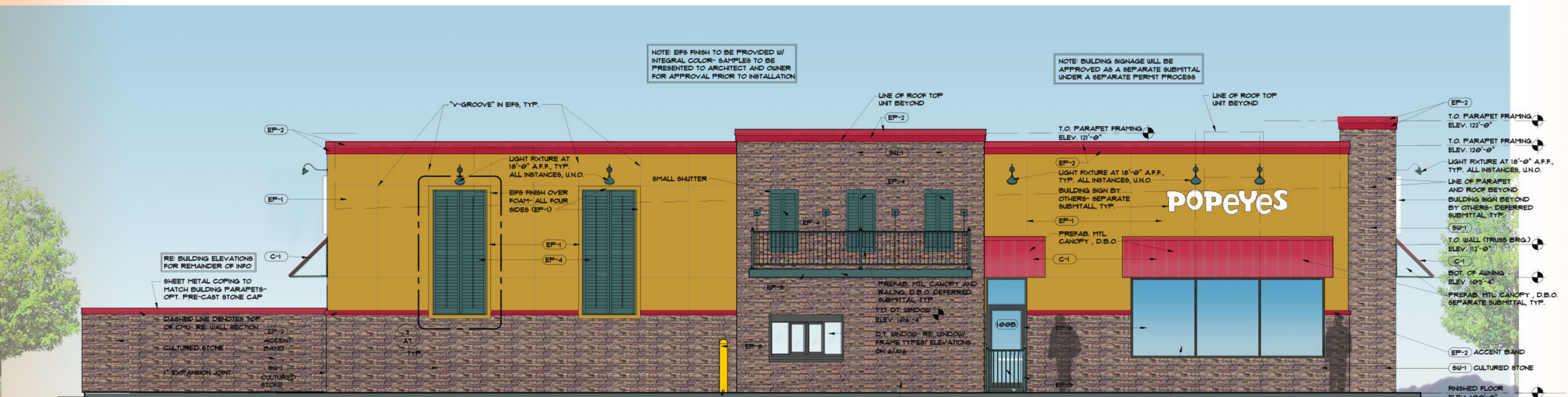




3 EAST ELEVATION W/ T.E.
1/4"=1'-0"



2 EAST ELEVATION
1/4"=1'-0"



1 NORTH ELEVATION
1/4"=1'-0"

POPEYES
Z&H 2297 OPTION 'B2'
3304 NAMEOKI ROAD, GRANITE CITY, IL.

PROJECT NUMBER:

EXTERIOR ELEVATIONS

10-21-2019

A6